



FEATURES

- Compact in design
- In-line mounted
- Quiet operation
- Instantaneous shut off against reverse flow, low forward pressure opening
- Disc seats before reverse flow to avoid fluid shock on reverse pressure differential
- The solenoid valves satisfy all relevant EC Directives

GENERAL

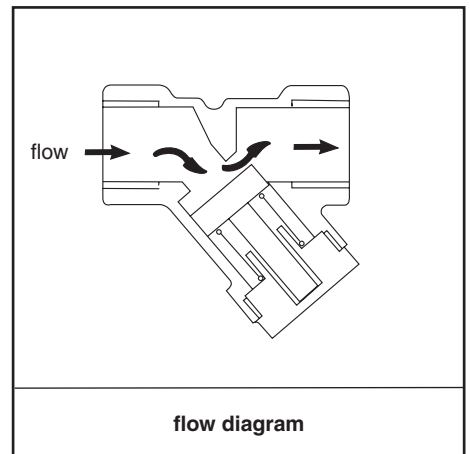
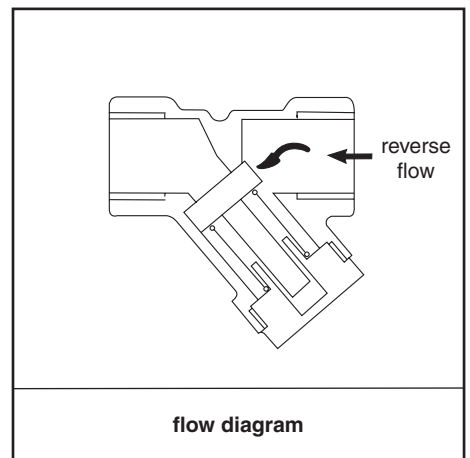
Differential pressure 0,07 - 10 bar [1 bar = 100kPa]
Maximum viscosity 65cST (mm²/s)

fluids (*)	temperature range (TS)	seal material (*)
air, inert gas, water, oil	-20°C to + 90°C	NBR (nitrile)

MATERIALS IN CONTACT WITH FLUID

(*) Ensure that the compatibility of the fluids in contact with the materials is verified

	Brass body	Stainless steel body
Body and seat	Brass	AISI 300 SS
Springs	Stainless steel	Stainless steel
Sealings	NBR	NBR
Discs	NBR	NBR
Disc holder	Brass	Stainless steel



SPECIFICATIONS

pipe size	orifice size	flow coefficient Kv		operating pressure differential (bar)		basic catalogue number	type
				min.	max. (PS)		
◇	(mm)	(m ³ /h)	(l/min)	air/water (*)			
Brass body							
1/4	7	0,60	10,0	0,07	10	V012A001	01
3/8	10	1,03	17,2	0,07	10	V012A002	02B
1/2	11	2,14	35,7	0,07	10	V012A003	02C
3/4	13	3,10	51,7	0,07	10	V012A004	02D
Stainless Steel body							
1/4	7	0,60	10,0	0,07	10	V012A005	03
3/8	10	1,03	17,2	0,07	10	V012A006	02B
1/2	11	2,14	35,7	0,07	10	V012A007	02C

SUFFIX TABLE

suffix					description
1	2	3	4	5	
V	G	D			Non-electrical, 2GD c, construction safety, gas/dust (EN 13463-5) FPM (fluorelastomer)

PRODUCT SELECTION GUIDE

STEP 1

Select basic catalogue number. Refer to the specifications table on page 1

Example: V012A005

STEP 2

Select suffix (combination) if required. Refer to the suffix table on page 2

Example: V

STEP 3

Final catalogue / ordering number

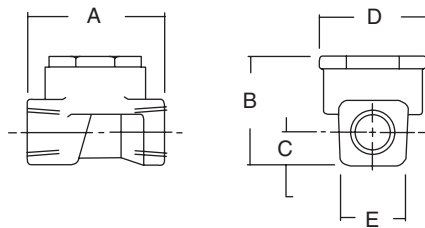
Example:

V012A005V

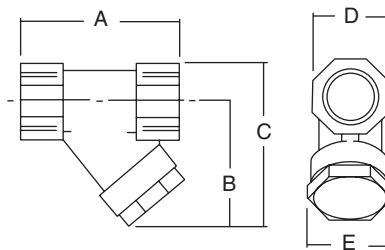
DIMENSIONS (mm), WEIGHT (kg)



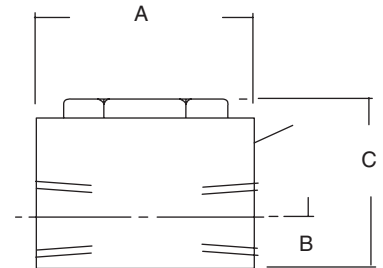
TYPE 01



TYPE 02 (B/C/D)



TYPE 03



type	A	B	C	D	E	weight
01	40	32	9,5	32	20	0,15 kg
02B	49	42	30	22	30	0,25 kg
02C	58	47	30	28	30	0,25 kg
02D	70	47	33	33	33	0,50 kg
03	42	9,5	32	-	-	0,15 kg

INSTALLATION

- Installation/maintenance instructions are included with each valve
- The solenoid valves can be mounted in any position without affecting operation
- Threaded pipe connection connections are NPT (ANSI 1.20.3)
- Declarations of conformity are available on request