

FEATURES

- Explosionproof operator for use in potentially explosive atmospheres according to ATEX-Directive 2014/34/EU
EU type examination certificate no.: **LCIE 12 ATEX 3005 X**
IECEX Certificate of Conformity no.: **IECEX LCI 12.0002X**
- Compliance with the Essential Health and Safety Requirements has been assured by compliance with the International and European Standards EN-IEC 60079-0, EN-IEC 60079-7, EN-IEC 60079-18 and EN-IEC 60079-31
- Easy electrical installation by means of a screw terminal coil
- Peak voltage suppression standard for DC executions
- The coil winding is fitted with a thermal fuse (in AC/DC) which will trip in case of excessive temperature due to prolonged overvoltage or a blocked core and cause the valve to de-energise and fail-safe
- Enclosure provided with integral strain relief for cable with an O.D. of 7 to 8,5 mm
- Ingress protection degree IP67
- A wide range of valves can be supplied with the operator

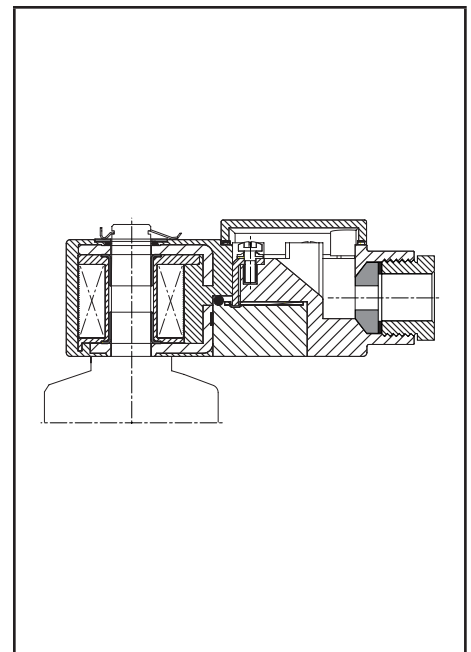


CONSTRUCTION

Solenoid enclosure	PBT
Cable gland	PA 66, M20 x 1,5
Nameplate	Polyester
Coil connection	Embedded screw terminals
Safety code	II 2G Ex e mb IIC T4 Gb II 2D Ex tb IIIC T 135°C Db IP67

ELECTRICAL CHARACTERISTICS

Standard voltages	DC (=) : 24V - 48V
	AC (~) : 24V-48V-115V-230V / 50 Hz
	24V-48V-100V-115V-200V-230V / 50-60 ⁽¹⁾ Hz
	⁽¹⁾ For the 256/356 & 238 series the MOPD may be reduced at 60 Hz, please contact your local Sales office.



TEMPERATURE CLASSIFICATION TABLES

AC (~) solenoids				DC (=) solenoids			
Pn (watt)	solenoid size			Pn (watt)	solenoid size		
	WBLP				WBLP		
			maximum ambient °C ⁽¹⁾ surface temperature				maximum ambient °C ⁽²⁾ surface temperature
			T4 135°C				T4 135°C
insulation class F (155°C) 100% E.D.				insulation class F (155°C) 100% E.D.			
3,5 ⁽²⁾	●		65	4	●		65

Check the wattage compatibility with the product selected.

⁽²⁾ The minimum allowable ambient temperature is -40°C for the operator. Actual temperature range can be limited depending on valve operation limits.

CONNECTIONS

- Internal and external earthing connection
- The operator can be rotated through 360° to select the most favourable position for cable entry

ORDERING INFORMATION

A valve supplied with the explosionproof operator will be identified with prefix WBLP before the catalogue number.

Example:

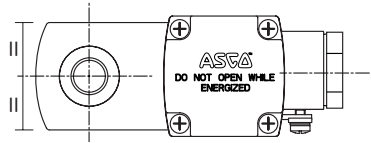
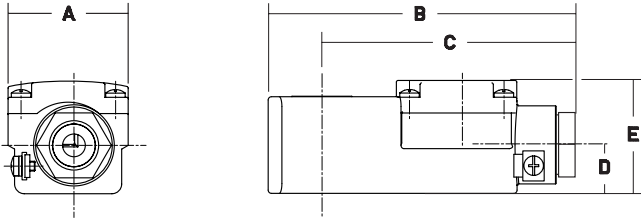
WBLP	G	551A005	230V/50 Hz
WBLP	G	553A005	230V/50 Hz
operator	pipe thread	basic number	voltage

DIMENSIONS (mm), WEIGHT (kg)



TYPE WBLP

Prefix "WBLP" solenoids
 EN-IEC 60079-7, EN-IEC 60079-18 and EN-IEC 60079-31
 II 2G Ex e mb IIC T4 Gb, II 2D Ex tb IIIC T135°C Db IP67



prefix	A	B	C	D	E	weight
WBLP	37	98	81,5	15	35,2	0,18



ACCESSORIES

Supply rail with pressure isolation valves
 Aluminium
 Inlet G 1/2, outlets G 1/4



supply rail for «n» valves with end pieces and low 65 mm mounting brackets

number of outlets	4	6	8	10	12	15
catalogue number	88100970	88100971	⁽¹⁾	⁽¹⁾	⁽¹⁾	⁽¹⁾
L (mm)	177	259	341	423	505	628

⁽¹⁾ Contact us.

