



### FEATURES

- Reliability: steel spool & sleeve technology with long service life
- Robust valve design, particularly recommended for use in high-temperature or dirty environments

### GENERAL

<b>Fluids</b>	Air or neutral gas, filtered, lubricated or not
<b>Operating pressure</b>	1 to 16 bar (with internal supply to pilot) -0,950 to 16 bar (with external supply to pilot)
<b>Ambient temperature</b>	-20°C to +80°C
<b>Flow (Qv at 6 bar)</b>	400 l/min (500 l/min with special subbase)
<b>Base</b>	ISO 15407-1 - VDMA 24563
<b>Subbase</b>	Single or joinable subbases

### CONSTRUCTION

<b>Body</b>	Aluminium, anodised, painted grey
<b>Internal parts</b>	Stainless steel, POM (polyacetal), aluminium
<b>Static seals</b>	NBR (nitrile)

### PILOTS

<b>Solenoid coil</b>	Encapsulated
<b>Electrical equipment</b>	Conforming to VDE 0580
<b>Seals</b>	NBR (nitrile)

### ELECTRICAL CHARACTERISTICS

	voltage	consumption	insulation class	protection degree	electrical connection
~	115V - 50/60Hz	4,3 /3,6 VA	F	IP 65	spade plug size 15 connector, EN 175301-803, industry standard form C (9,4 mm) rotatable by 90°
=	24V	1,9 W			

### SPECIFICATIONS

	function symbol	operators Pilot (14) solenoid air operated return (12)	port size	flow		catalogue number without connector <sup>(1)</sup>	(M)
				at 6 bar l/min	Kv m³/h		
5/2		spring return	subbase G 1/8	400	0,38	181BA400A0000YY	▼
		solenoid air operated return				181BB400A0000YY	▼
5/3		pressure held <b>W1</b>				181BB600A0000YY	▼
		pressure applied <b>W2</b>				181BB700A0000YY	▼
		pressure released <b>W3</b>				181BB500A0000YY	▼

(M) Type of manual operator on pilot(s): ▼ : impulse

(1) See page connectors ( )

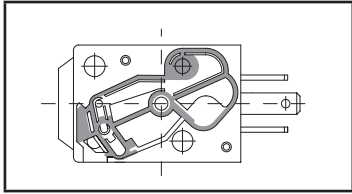
voltage	YY
24VDC	61
115 VAC	30

### OPTIONS (upon request)

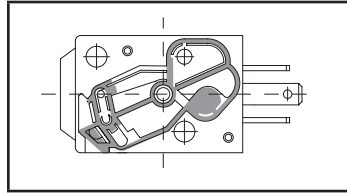
- Larger ported manifolds for higher flow rates
- Quick-acting version < 6 ms
- Solenoid coil form C, ISO 15217/DIN 43650, 8 mm

**INTERNAL/EXTERNAL PILOT AIR SUPPLY**

The valves are equipped with a selector seal allowing to choose between internal and external pilot air supply



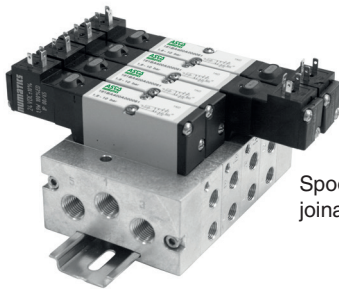
Internal supply



External supply

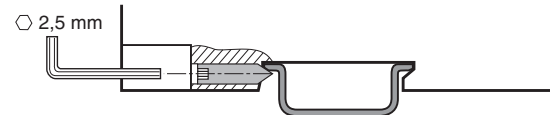
**SUBBASES**

Subbase	size	type of port	description	port connection			catalogue number
				1-3-5	2-4	12-14	
single subbase	ISO 02	side	subbase	G 1/8	G 1/8	M5	35500525
joinable subbase	ISO 02	side	subbase	-	G 1/8	M5	35500527
			set of 2 end plates	G 1/4	-	-	88135539
			set of 3 plugs on main pressure (1) and exhausts (3-5) for 2 different pressure supplies (see below).				88135541
			blanking plate				88100358

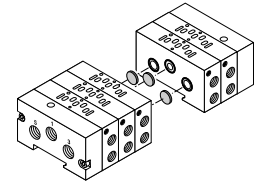
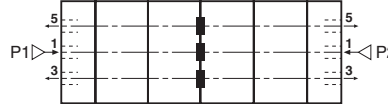


Spool valves mounted on joinable subbases

Joinable subbases ISO 02 can be mounted on symmetric EN 50022 profiles with hexagon screws

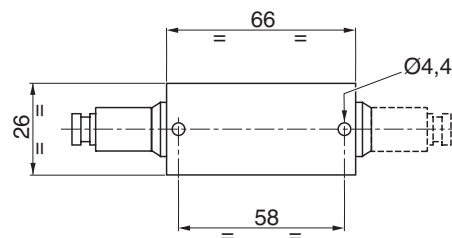
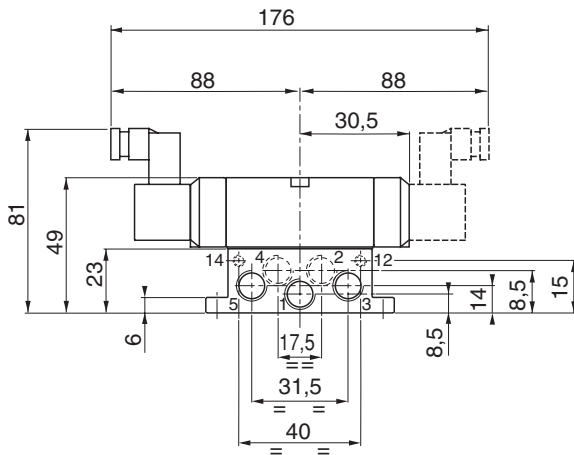


The set of plugs allows subbases to be supplied with 2 different pressure inlets




**DIMENSIONS (mm), WEIGHT (kg)**

Valve with integrated pilot on single subbase

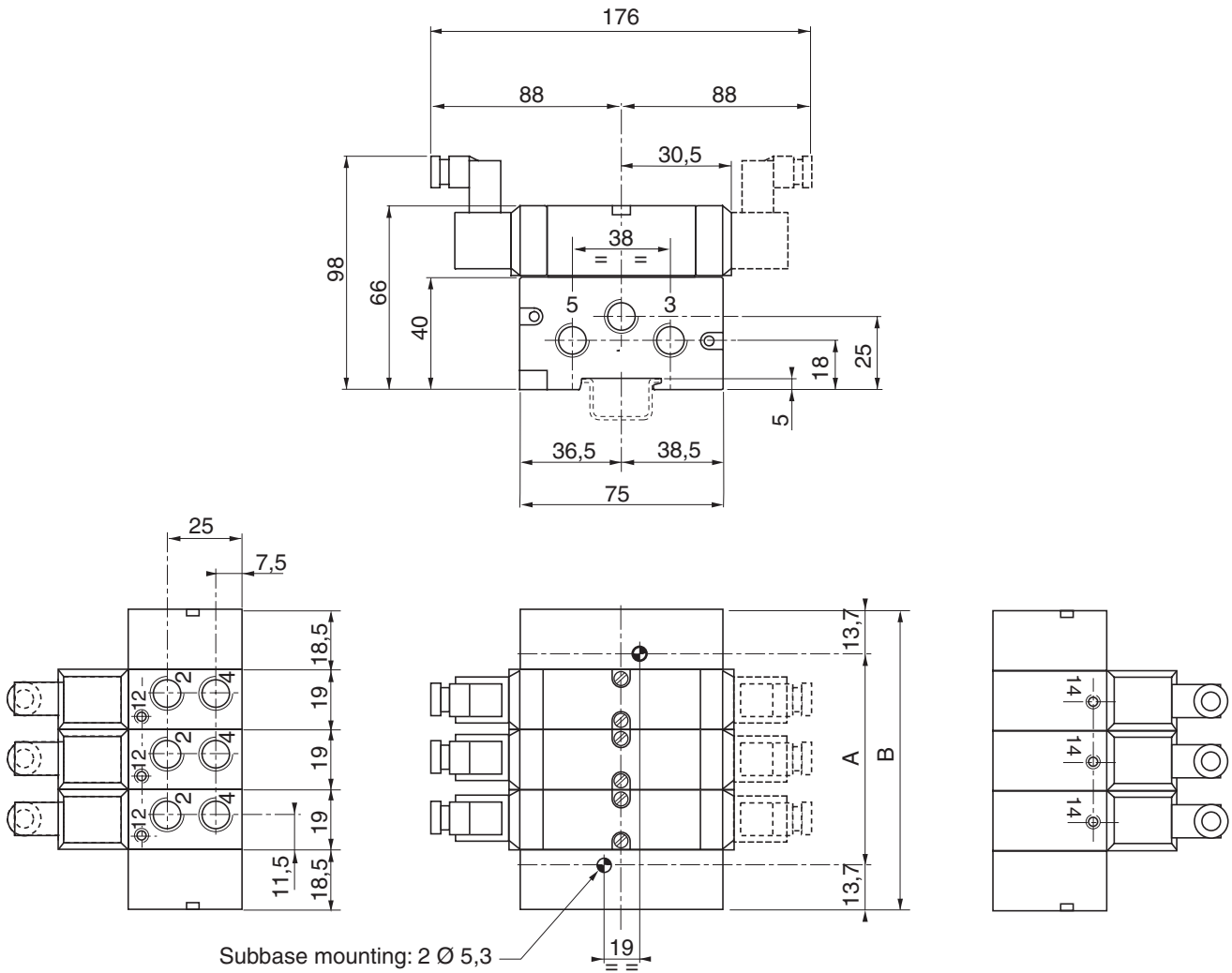


weight	
valve + subbase	
181BA400A... monostable	181BB 4 / 5 / 6 / 700A... bistable
0,106	0,144

port no.	Ø port
1-3-5	G 1/8
2-4	G 1/8
12-14	M5

**DIMENSIONS (mm), WEIGHT (kg)** 

Valve with integrated pilot on joinable subbase



number of subbases	A	B	weight valve + subbase + end plates
3	66,5	94	1,100
4	85,5	113	1,390
5	104,5	132	1,680
6	123,5	151	1,970
7	142,5	170	2,260
8	161,5	189	2,550
+1	+19	+19	+ 0,290

