

### FEATURES

- Reliability: spool & sleeve technology with long service life
- Modular assembly with joinable subbases
- Subbases with side or bottom ports

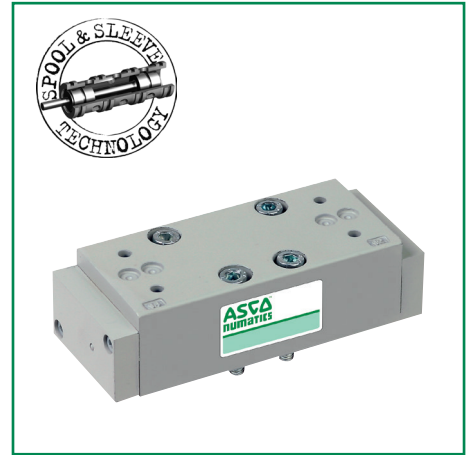
### GENERAL

**Fluid** Air or neutral gas, filtered, lubricated or not  
**Operating pressure** – 0,950 to +10 bar  
**Ambient temperature** – 20°C to +80°C  
**Flow (Qv at 6 bar)** ISO 1: 1400 l/min (ANR)  
 ISO 2: 2400 l/min (ANR)  
 ISO 3: 4800 l/min (ANR)

**Life** 200 millions of cycles  
**Base** ISO 5599/1 sizes 1-2-3 - AFNOR NF E49080  
**Subbase** Single subbase ISO/AFNOR NF E49085  
 Joinable subbase ISO/VDMA 24345  
 Joinable subbase with integrated functions

### CONSTRUCTION

**Body** Aluminium  
**Other parts** Stainless steel, steel, aluminium alloy or plastic  
**Static Seals** NBR (nitrile)



### SPECIFICATIONS

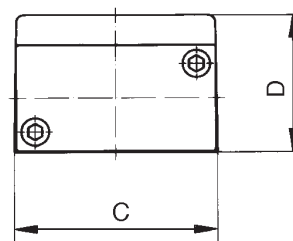
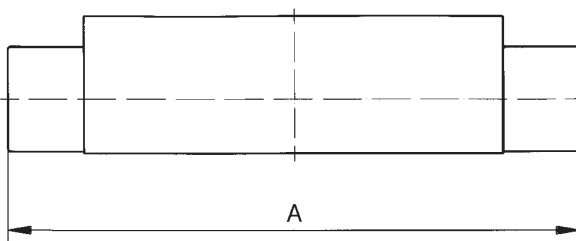
function symbol	operator		size	pilot pressure (bar)		catalogue numbers
	pilot (14)	return (12)		mini.	maxi.	
	air operated	spring	ISO 1 ISO 2 ISO 3	1	21	E12PA4000000000 E23PA4000000000 E34PA4000000000
	air operated	air operated	ISO 1 ISO 2 ISO 3	1	21	E12PP4000000000 E23PP4000000000 E34PP4000000000
	air operated pressure held <b>W1</b>		ISO 1 ISO 2 ISO 3	1	21	E12PP6000000000 E23PP6000000000 E34PP6000000000
	air operated pressure applied <b>W2</b>		ISO 1 ISO 2 ISO 3	1	21	E12PP7000000000 E23PP7000000000 E34PP7000000000
	air operated pressure release <b>W3</b>		ISO 1 ISO 2 ISO 3	1	21	E12PP5000000000 E23PP5000000000 E34PP5000000000

### OPTIONS

- Material for use in potentially **explosive atmosphere** caused by gases or dusts (ATEX directive 2014/34/EU), contact us

### SUBBASES AND ACCESSORIES

### DIMENSIONS (mm), WEIGHT (kg)



size	A	C	D	weight (kg)
ISO1	104,0	42,0	29,0	0,30
ISO2	126,0	50,8	31,6	0,50
ISO3	160,8	63,5	41,0	0,96

incl. blots and gasket

