

### FEATURES

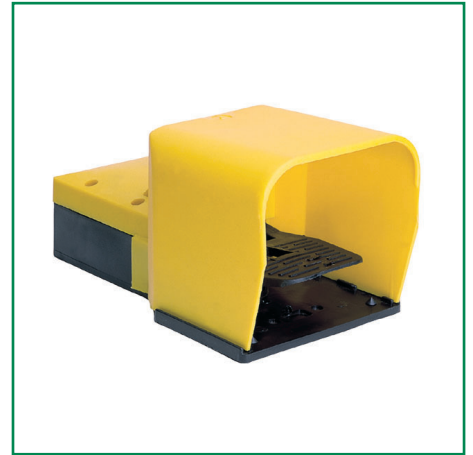
- valve with a covering cap
- Spring return or pedal return

### SPECIFICATIONS

<b>Fluid</b>	Air or neutral gas, filtered, lubricated or not
<b>Ports</b>	G 1/4
<b>Pressure</b>	2 to 10 bar
<b>Temperature</b>	-25°C to +60°C
<b>Flow (Qv at 6 bar)</b>	655 l/min (ANR)

### CONSTRUCTION

<b>Covering cap</b>	Shock-resistant plastic (polyethylene) in signal yellow
<b>Housing</b>	Shock-resistant plastic (polyethylene) in black
<b>Internal parts</b>	Anodized or nickel plated aluminium, stainless, brass
<b>Seals</b>	NBR (nitrile)



### SPECIFICATIONS

5/2	Symbols functions	Operators		catalogue number
		Pilot	Return	
		Pedal 2 positions		<b>ZF2FD400OG00000</b>
		Pedal	Spring	<b>ZF2FA400OG00000</b>

### DIMENSIONS (mm), WEIGHT (kg) (mm)

