



FEATURES

- To be mounted on the exhaust port of a solenoid valve to protect internal parts from the environment

GENERAL

| | Bronze | Sintered st. steel | Porous plastic |
|---------------------------|----------------|--------------------|----------------|
| Differential pressure | 0 to 10 bar | 0 to 10 bar | 0 to 10 bar |
| Fluid temperature range | -10°C to +70°C | -10°C to +70°C | -10°C to +70°C |
| Ambient temperature range | -10°C to +70°C | -10°C to +70°C | -10°C to +70°C |
| Load loss | Minimum | Minimum | Minimum |

CONSTRUCTION

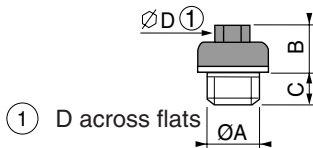
| | | | |
|------------------|----------------|--------------------------|--------------------|
| Body | Porous bronze | Sintered stainless steel | Porous plastic |
| Connection piece | Brass | Nickel-plated brass | Plastic |
| Pipe size | G 1/8 or G 1/4 | G-NPT 1/8 to 1/2, M5 | G 1/8 to G 1/2, M5 |



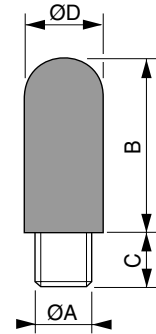
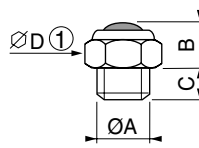
SPECIFICATIONS

| pipe size | catalogue number | | |
|-----------|----------------------|-----------------------------|-------------------|
| | BRONZE (set of 2) | SINTERED STAINLESS STEEL | POROUS PLASTIC |
| G 1/8 | 97701875 | 34600418 | 34600406 |
| G 1/4 | 97701876 | 34600419 | 34600407 |
| G 3/8 | - | 34600478 | 34600408 |
| G 1/2 | - | 34600479 | 34600409 |
| M5 | - | 34600484 | 34600405 |
| NPT 1/8 | - | 34600482 | - |
| NPT 1/4 | - | 34600483 | - |
| NPT 3/8 | - | 34600480 | - |
| NPT 1/2 | - | 34600481 | - |

DIMENSIONS (mm), WEIGHT (kg)



① D across flats



| POROUS BRONZE (set of 2) | | | | | |
|--------------------------|-----|----|---|---|--------|
| catalogue number | Ø A | B | C | D | weight |
| 97701875 | 1/8 | 7 | 5 | 7 | 0,004 |
| 97701876 | 1/4 | 10 | 6 | 9 | 0,010 |

| SINTERED STAINLESS STEEL | | | | | |
|--------------------------|-----|-----|-----|----|--------|
| catalogue number | Ø A | B | C | D | weight |
| 34600418/482 | 1/8 | 10 | 6 | 13 | 0,006 |
| 34600419/483 | 1/4 | 11 | 8 | 16 | 0,010 |
| 34600478/480 | 3/8 | 11 | 9 | 19 | 0,014 |
| 34600479/481 | 1/2 | 14 | 9 | 24 | 0,023 |
| 34600484 | M5 | 4,5 | 3,2 | 8 | 0,001 |

| POROUS PLASTIC | | | | | |
|------------------|-----|----|----|----|--------|
| catalogue number | Ø A | B | C | D | weight |
| 34600406 | 1/8 | 27 | 6 | 13 | 0,002 |
| 34600407 | 1/4 | 34 | 7 | 15 | 0,004 |
| 34600408 | 3/8 | 55 | 11 | 18 | 0,006 |
| 34600409 | 1/2 | 62 | 12 | 23 | 0,010 |
| 34600405 | M5 | 16 | 5 | 7 | 0,0005 |

