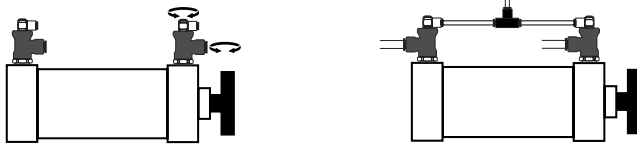


FEATURES

- Air-operated, monostable, normally-closed 2/2 valve
- Blocking fittings can be used to interrupt the circulation of compressed air
- **When installed in pairs**, they ensure that the cylinder stops as soon as pilot pressure is lost
- They can be used to lock the load in the event of loss of the pressure supply or to set a cylinder to intermediate stable positions

INSTALLATION

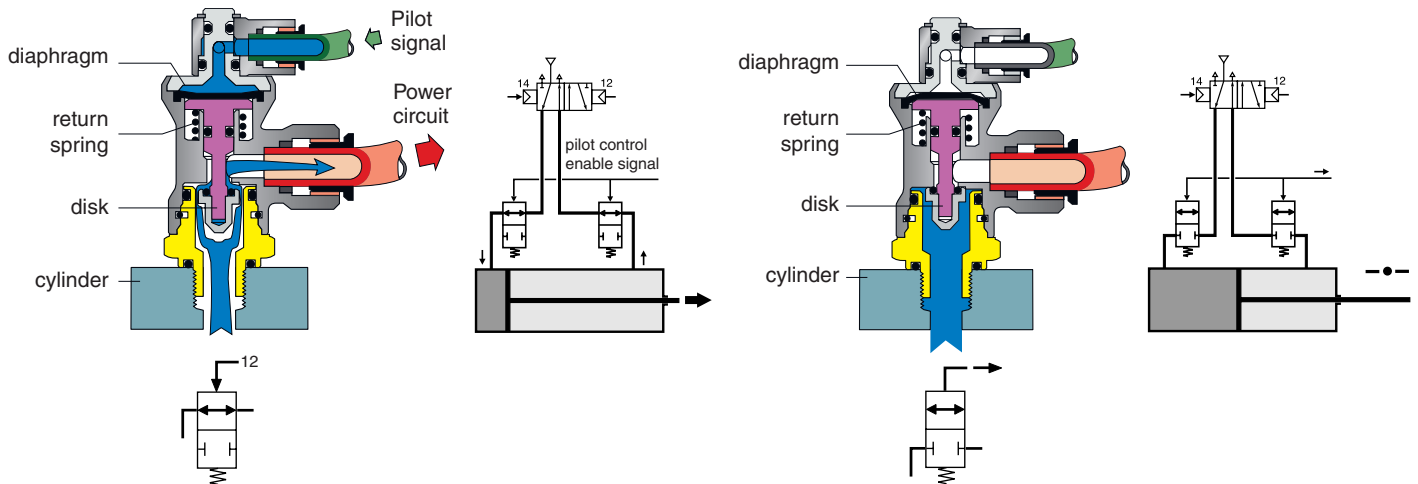
- Directly fitted to cylinder ports for compact installation
- Fully orientable on all ports to adapt to any pneumatic connection configuration



OPERATING PRINCIPLE

Cylinder in movement (pilot pressure applied)

Cylinder locked (no pilot pressure)

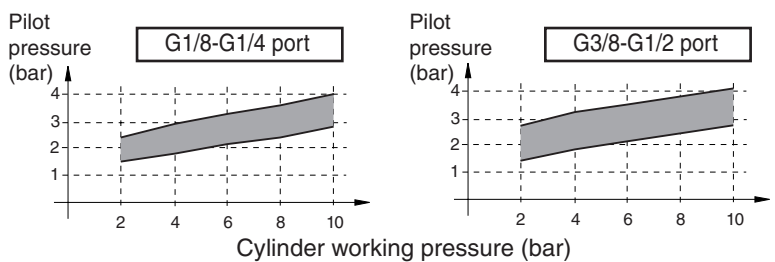


CONSTRUCTION

MEDIUM	: Lubricated or unlubricated filtered neutral gas or air
OPERATING PRESSURE	: 10 bar max.
PILOT PRESSURE	: 1.5 to 4 bar
TEMPERATURE	: -20°C to +70°C
FLOW (Qv at 6 bar)	: see table below
LEAK RATE	: <0.2 l/h
BODY	: treated brass
DIAPHRAGM AND SEALS	: Nitrile (NBR)

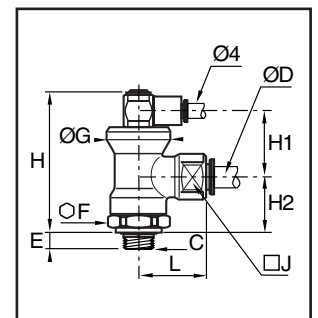
Piloting on/off thresholds

depending on cylinder working pressure



SPECIFICATIONS - DIMENSIONS

Port size ØC	Coupler size ØD	Flow at 6 bar l/min (ANR)	catalogue number	Dimensions								Weight (kg)
				E	F Ø	G Ø	H	H1	H2	J □	L	
G1/8	6	650	34602448	5,5	21	24	53	24,5	21	17	28	0,127
G1/4	8	650	34602450	6,5	21	24	53	24,5	21	17	28	0,124
G3/8	8	650	34602451	7,5	21	24	53	24,5	21	17	28	0,128
G3/8	10	1600	34602452	7,5	24	28	56	25	25	27	35	0,214
G1/2	12	1600	34602453	9	24	28	56	25	25	27	37,5	0,221



Port connection pushing fittings and power at pilot ports